

HAND PUSH SEEDER WITH FERTILIZER MACHINE



Performance and characteristics of seeders

1. This product is applicable to the ploughed land with or without ridge in plain, mountainous area and hill.
2. The hand-propelled seeding in a rolling manner is easy and efficient, and environmental-friendly.
3. The transparent polycarbonate engineering plastic used make the seeding can be directly seen and is solid and durable.
4. The design is scientific and the seeding is accurate. The planting distance and density can be adjusted at any time according to requirement.

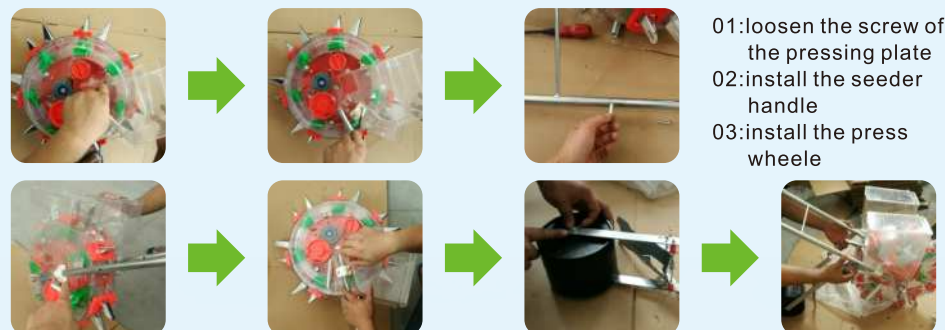
Suitable seeds	maize, beans, peanuts, cotton, sunflow seeds etc.(like round seeds)
Function	Planting & Fertilizer
Hole seeding rate	1-2 adjustable
Seeding depth	35-78mm
Work efficiency	0.55-2ha./day or more
Seeds Box	3.7kg
Fertilizer box	3.7kgs
space(seed to seed)	20cm-30cm(can adjust)
Spike number	14(can adjust)

Precautions:

1. Move forward according to the direction pointed by arrow and the speed shall not be too fast.
2. After the seed is selected and put into it, the machine shall be normally idled for a circle before being used for seeding.
3. Adjust the handle and soil spreading plate spring to ensure the soil spreading and pressing effect of seed.
4. Clean and dry the machine and oil bearing and iron nozzle after the use.

MODEL : VAM - 7A2 - 2

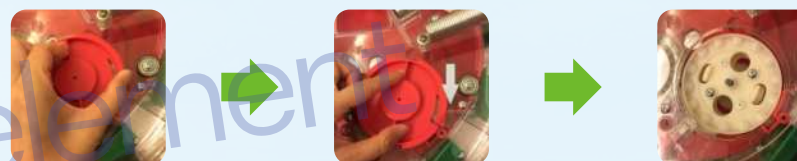
AA: HAND PUSH SEEDER MACHINE INSTALLATION DIAGRAM



- 01:loosen the screw of the pressing plate
- 02:install the seeder handle
- 03:install the press wheel

HOW TO CHANGE TO THE SEED WHEELS

1. Rotate the reseed connecting rod to off position and screw off reseed cap.



2. Take out the seed wheels in turn



3. Put the seed wheels in turn



HOW TO CHANGE THE SEED TO SEED DISTANCE

01: Remove seed box



02: loosen the seeder's Front and back sign No.:7 screw



03: Use the short plastic rods Connect two side covers



04: Put two side covers on the seeder disc,



05: Put the plastic on the seeder front body,
on the seed box on the seeder with screw



ITEM NO	IMAGE	USES
NO.: 0		no seeds
NO.: 1		rye and small round seeds
NO.: 2		moong, green gram, coriander
NO.: 5		corn, beans, peanuts (like round seeds)
NO.: 11		corn, beans, peanuts (like round seeds)
NO.: 22		corn, beans, peanuts (like round seeds)
NO.: 33		corn, beans, peanuts (like round seeds)
NO.: 44		corn, beans, peanuts (like round seeds)
NO.: cotton		cotton, moong, green gram, coriander, pigeon pea
NO.: 77		peanuts
NO.: 88		moong, green gram, coriander, pigeon pea
CUCUMBER		rice, cucumber
ADJUSTABLE DISC		peanuts, etc...